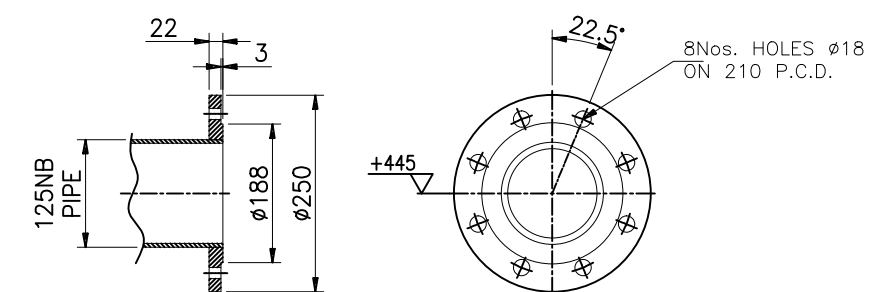
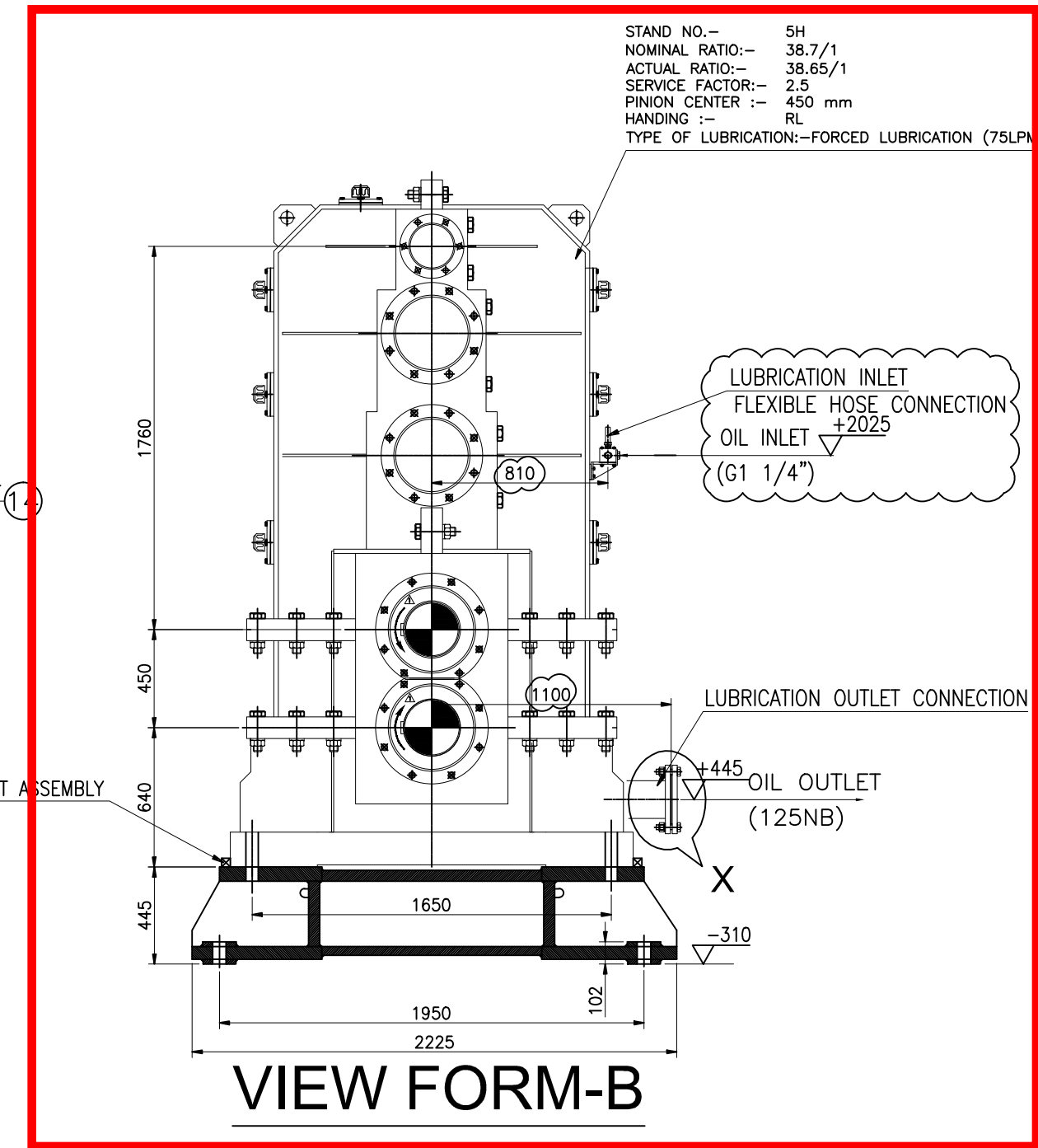
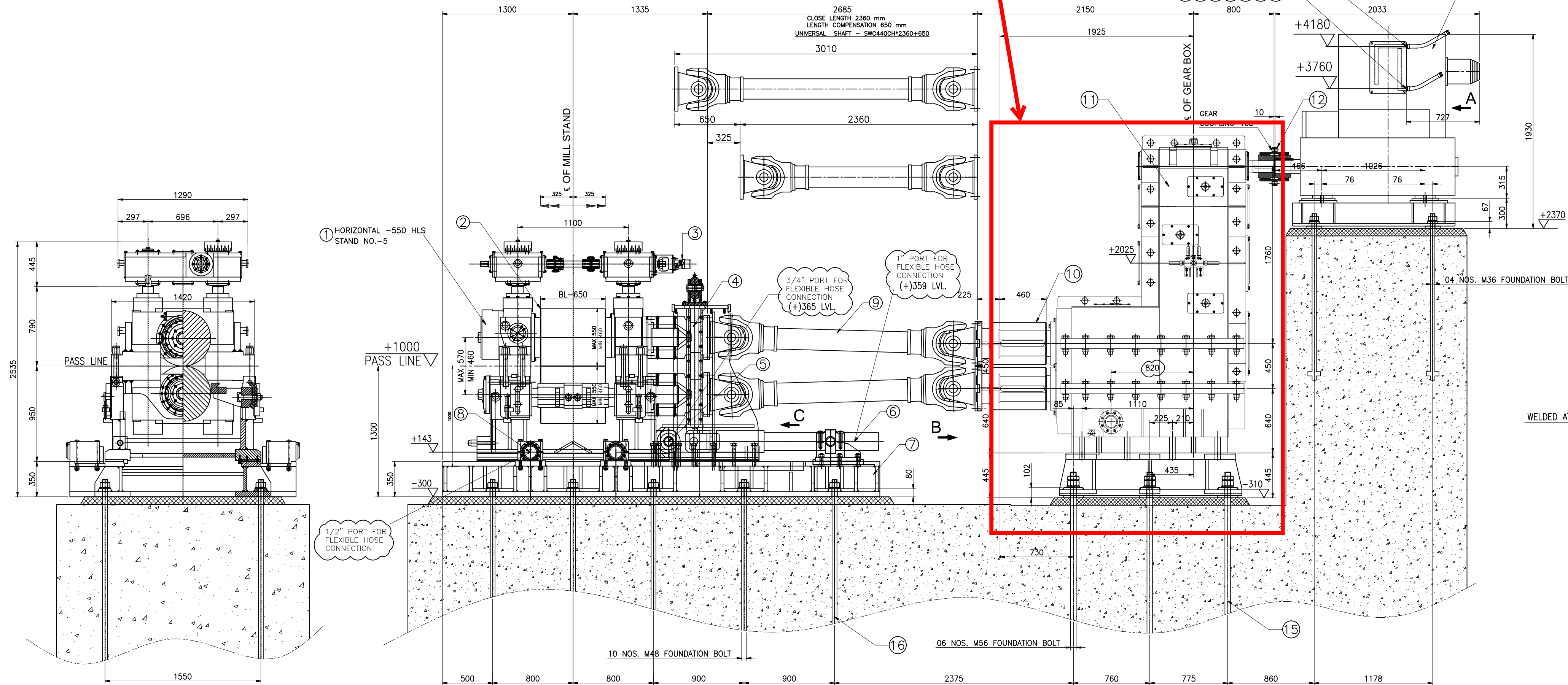
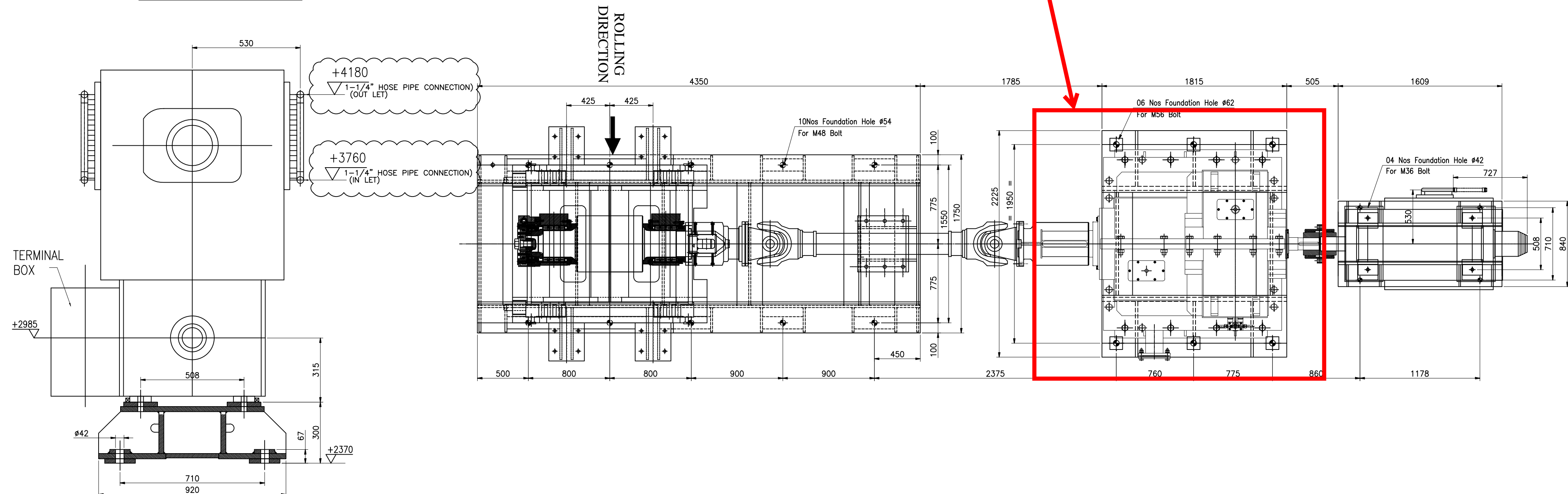


SRRL-1408-313

REV.	REVIZYON / REVISION	TARİH/DATE	İSİM/NAME	İMZA/SIGN.	ONAY/CHECKED
1	MOTOR FOUNDATION BOLT CENTRE CHANGE	20-09-14	SUNIL		
2	GEAR BOX & MOTOR MOUNTING CHANGE	10-10-14	SUNIL		
3	GEAR BOX CHANGE	09-12-14	SUNIL		
4	PART NO. CALLOUT & LISTED PORT SIZE MARKED AS PER CUSTOMER COMMENTS	03-07-15	SUNIL		
5	PART NO. CALLOUT & LISTED PORT SIZE MARKED AS PER CUSTOMER COMMENTS	28-11-15	SUNIL		



VIEW FORM-C



VIEW FORM-A

MOTOR -3465 Kgs. ( APPROX)  
MOTOR BASE FRAME-600 Kgs. ( APPROX)  
GEAR BOX -20200 Kgs. ( APPROX)  
GEAR BOX FRAME-1400 Kgs. ( APPROX)  
HLS 550 mm CRS.-21900 Kgs. ( APPROX)

**PREET**  
Machines Limited  
UNIT OF PREET GROUP

**TITLE**  
GENERAL ARRANGEMENT HORIZONTAL 550 mm  
STAND - 5H

CLIENT PROJECT-170

SHEET- 2

SCALE-1:1	DESIGN	DATE
	S.K.UPADHYAY	12-09-2014
CHECK	S.K.SHARMA	12-09-2014
APPRD.		
DRW. NO.	SRRL-1408-313	R-5